



CITY OF EAST GRAND RAPIDS

750 LAKESIDE DRIVE SE-EAST GRAND RAPIDS, MICHIGAN 49506

NOTICE-Sanitary Sewer System Improvements **Please Keep for Future Reference**

February 28, 2023

Dear East Grand Rapids Resident/Property Owner:

The city will be installing a new pipe liner in the sanitary sewer main on a section of your street known as cured-in-place-pipe within the coming weeks. Before the pipe lining commences residents will receive a second, door hanger notice that be placed on your front door by the contractor. The door hanger will note specific dates and times that water should not be used and additional instructions.

What is cured-in-place pipe? It is a trenchless pipe rehabilitation method where a fiberglass or polyester fiber cloth is placed and pulled down the existing sewer main. Once the fiberglass or polyester cloth is in place, a resin is applied to the cloth. A special balloon is then filled with water and then inserted into the fiberglass or polyester cloth material. It is inflated to create and harden the new pipe within the existing pipe. Once the new pipe has cured, a piece of equipment with a cutter is inserted into the sewer main to cut openings where sewer laterals exist to re-establish the connection of the property owners sewer lateral to the City sewer main. Please note illustrations of this product and method on the back of this notice.

Why is the City lining this section of sewer main? The City evaluates sanitary and storm sewer pipe and checks for general pipe condition to look for cracking and/or other deficiencies. Sewers constructed before the mid 1970's were constructed mostly of clay tile. When cracks form in clay tile or other similar pipe materials, they allow ground water into the sanitary sewer known as infiltration and inflow. Clean water in the sanitary sewer collection system creates an increased cost to treat clean water that should not be in the sanitary system. Cracks also allow tree roots into the sanitary sewer which increases the need for maintenance. By lining the sanitary sewer the City will be extending the life of the sanitary sewer main for 50-60 years while also eliminating tree root and ground water infiltration into the sanitary sewer system. This process also eliminates the need for other infrastructure to be disturbed, such as the road/curb/sidewalk, which saves overall cost, time and construction impact in the area.

What is the duration of the project? Once the project begins, it will be completed by the end of each day, typically within 8- 24 hours. Start and completion times will be noted on the door hangers provided by the contractor.

Is there anything I need to do before or during this process? Because your sanitary sewer lateral will be out of service for 8-24 hours while the new pipe liner is being established, homeowners should not use or minimally use water that discharges into the sanitary sewer during the pipe lining process because the new liner will be temporarily blocking your sanitary sewer lateral connection to the City sanitary sewer main until that connection is restored. If a home is connected to the sanitary sewer system with footing drains or sump pumps they need to be disconnected before the project commences and redirected externally on your property. Footing drains and sump pump connections are not legal connections to the sanitary sewer system.

If you have ever experienced gurgling from a toilet from crews cleaning sewer mains in the past, it is likely that your homes roof vents may not be functioning properly. If vents have not been cleared or checked by a plumber and this has occurred in the past, you may consider covering toilets with a plastic bag and closing the toilet lid to prevent any water from existing the toilet bowl.

Who is the contractor? Corby Energy Services, INC, from Belleville, MI. They may be contacted at 734-547-9237. Corby will place a door hanger on you door before they line the sewer in front of your residence.

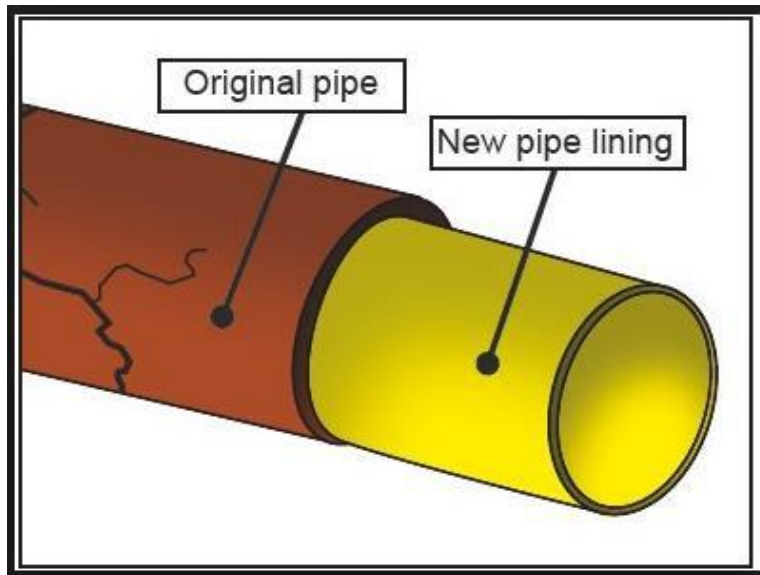
Who can I contact with questions? A contact number will be provided for Corby Energy Services for on-site staff on the door hanger placed at your home. City of East Grand Rapids Department of Public Works may also be contacted at 616-940-4817.

Where can I find additional information? The City provides information and frequent project updates via the City website. To check in on project information and updates go to www.eastgr.org and select the construction updates tab under quick links on the left side of the home page.

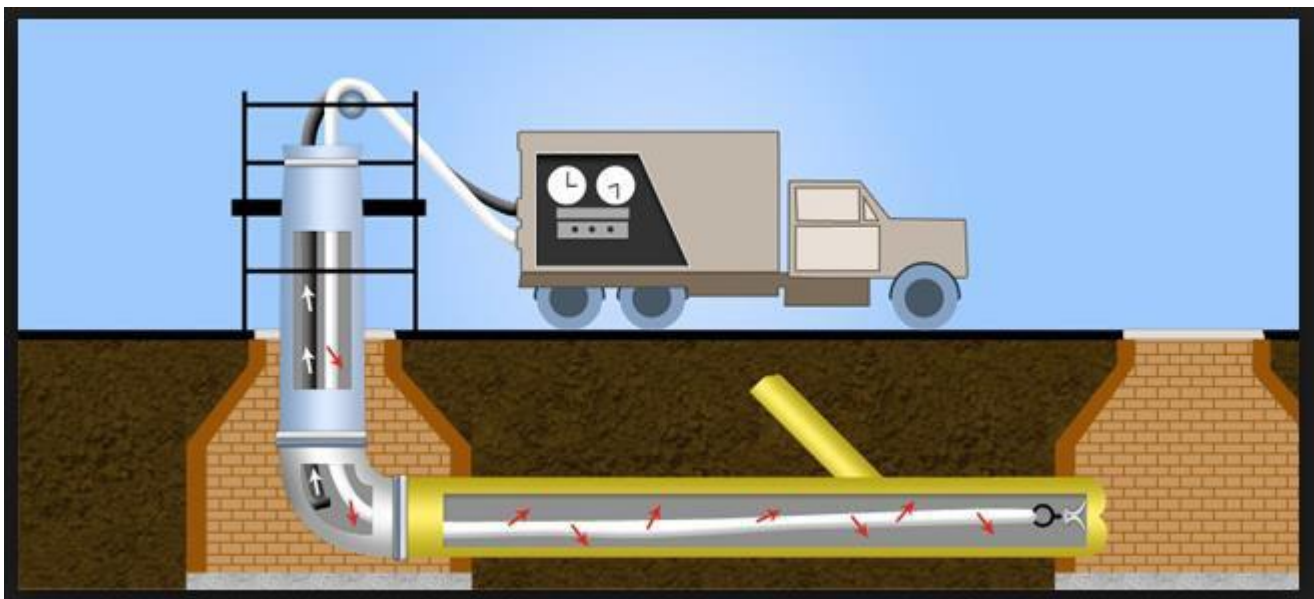
Thank You,

East Grand Rapids Department of Public Works

(See Reverse Side)



Sewer Pipe Lining (Cured-In-Place-Pipe)



Sewer Pipe Lining (Cured-In-Place-Pipe) Installation